

# Linear Electric Actuator

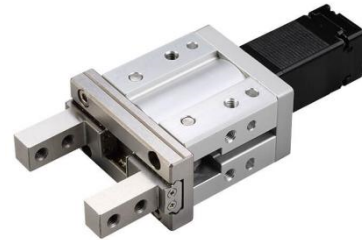
Series AEGL

Cat :

## Electric Gripper - Lead Screw Drive

### Features

- Compact Size
- Equipped with closed-loop stepping motor
- Smoother movement
- Three different control interface



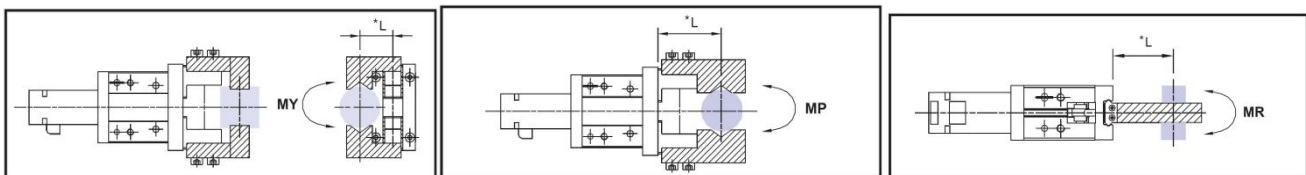
### Technical Specifications

Stroke (mm)	10	14
Weight (Kg)	0.98	
Gripping force (N)	22 to 98 (20-100%)	
Open/close speed (mm/s)*	5 to 50	
Position repeatability (mm)	±0.02	
Guide structure	Linear guide	
Operating temperature range (°C)	0° to 40°C	
Operating humidity range (%)	RH90	
Motor dimension (mm)	25□	
Weight (g)**	368	552

\*Total stroke of both sides

\*\* Weight included with motor

### Allowable Moment



\* L: Distance to the loading location

### Maximum Moment

(Unit - Nm)

Series	AEGL0010	AEGL0014
Allowable Yawing Moment <b>MY</b>	1.32	1.94
Allowable Pitching Moment <b>MP</b>	1.32	1.94
Allowable Rolling Moment <b>MR</b>	2.65	3.88

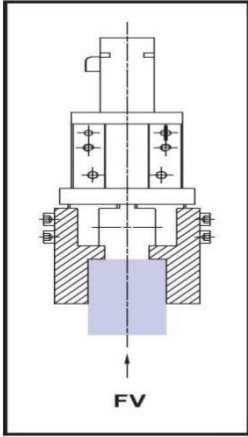
\* The value in the chart is static, not dynamic loading and torque

# Linear Electric Actuator


Series AEGL

Cat :

## Maximum Vertical Force

Series	AEGL0010	AEGL0014
Outer view		
Vertical maximum force FV (N)	147	255

## Controller Details

Controller	Controller model	Controller mode	Features	Electrical specification
	JC100	IO control mode	By IO Control,max.127 position points, can be executed.	The voltage of control circuit is 24V. Operating voltage DC24V, rated current 2A,peak current 3A. Operating voltage DC48V, rated current 1A,peak current 2A.
		Communication control mode	Use mod bus as the interface of RS485(Connect max.16 controllers) and 1 set mini USB	When the voltage is DC48V but same torque, the rotation speed will be raised.

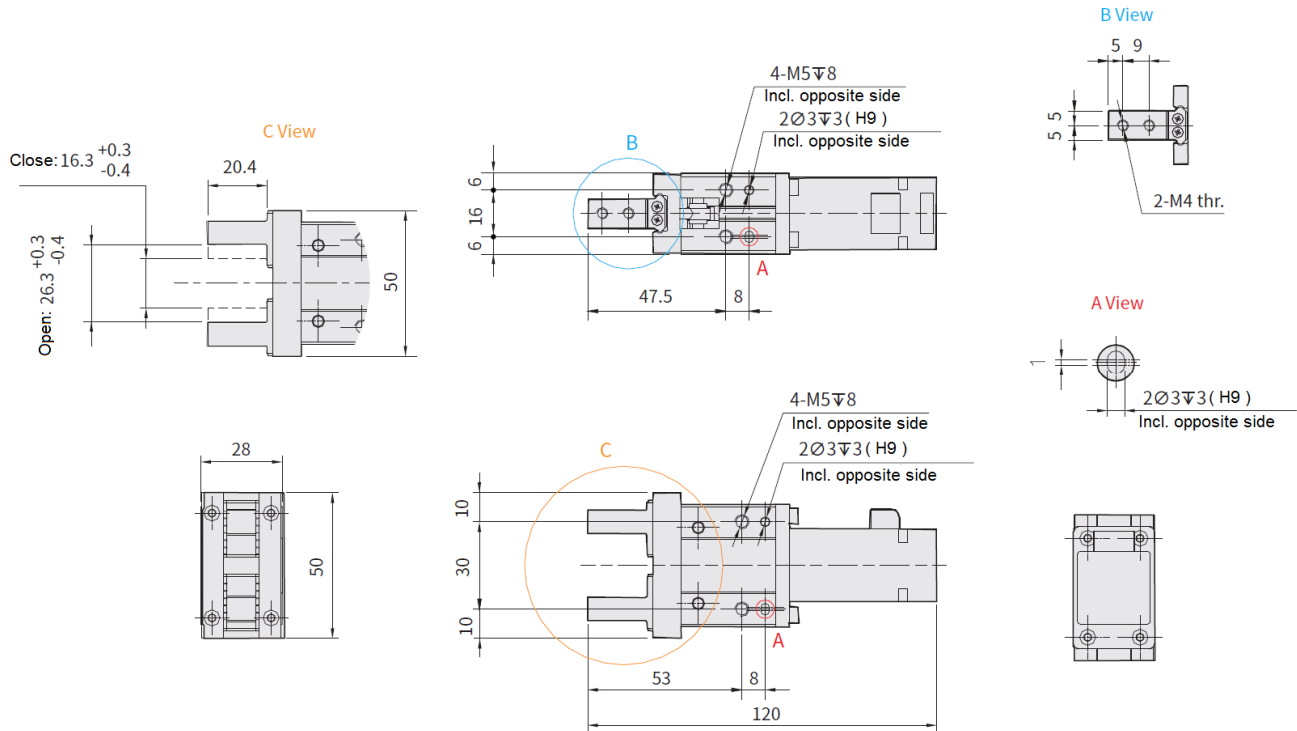
# Linear Electric Actuator

Series AEGL

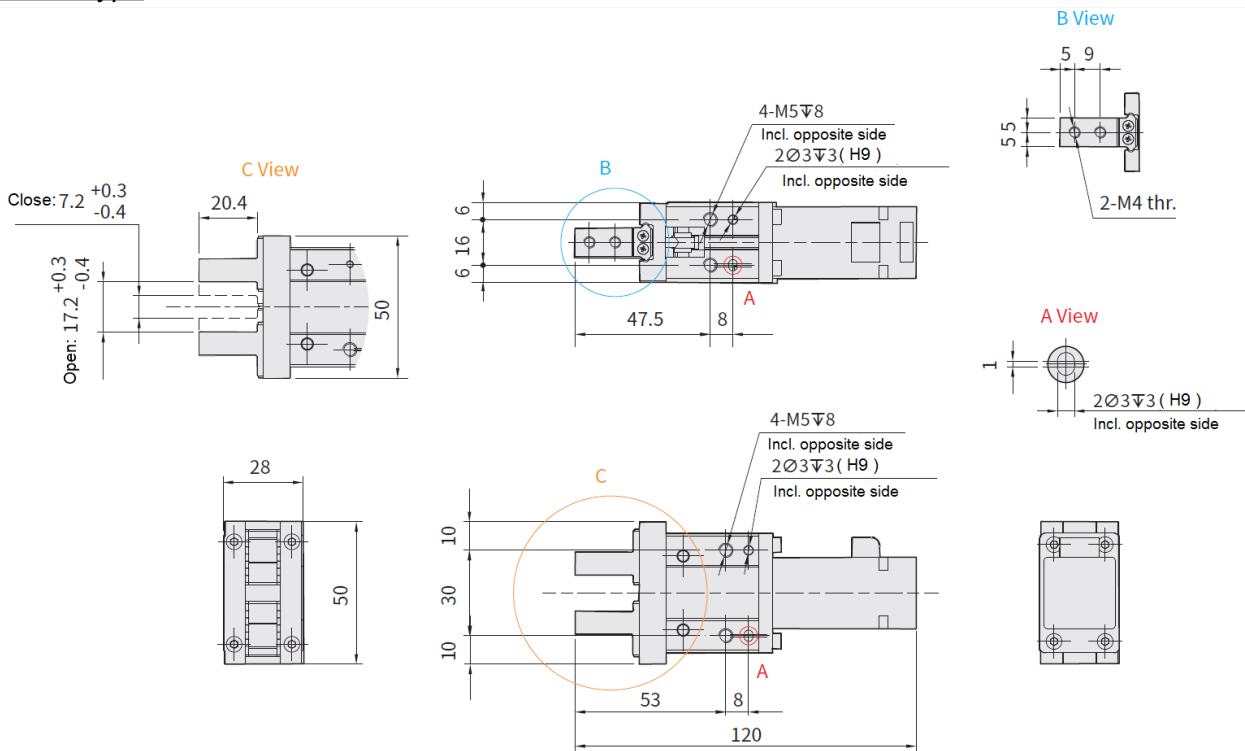
Cat :

**AEGL0010 :**

Standard Type



Narrow Type



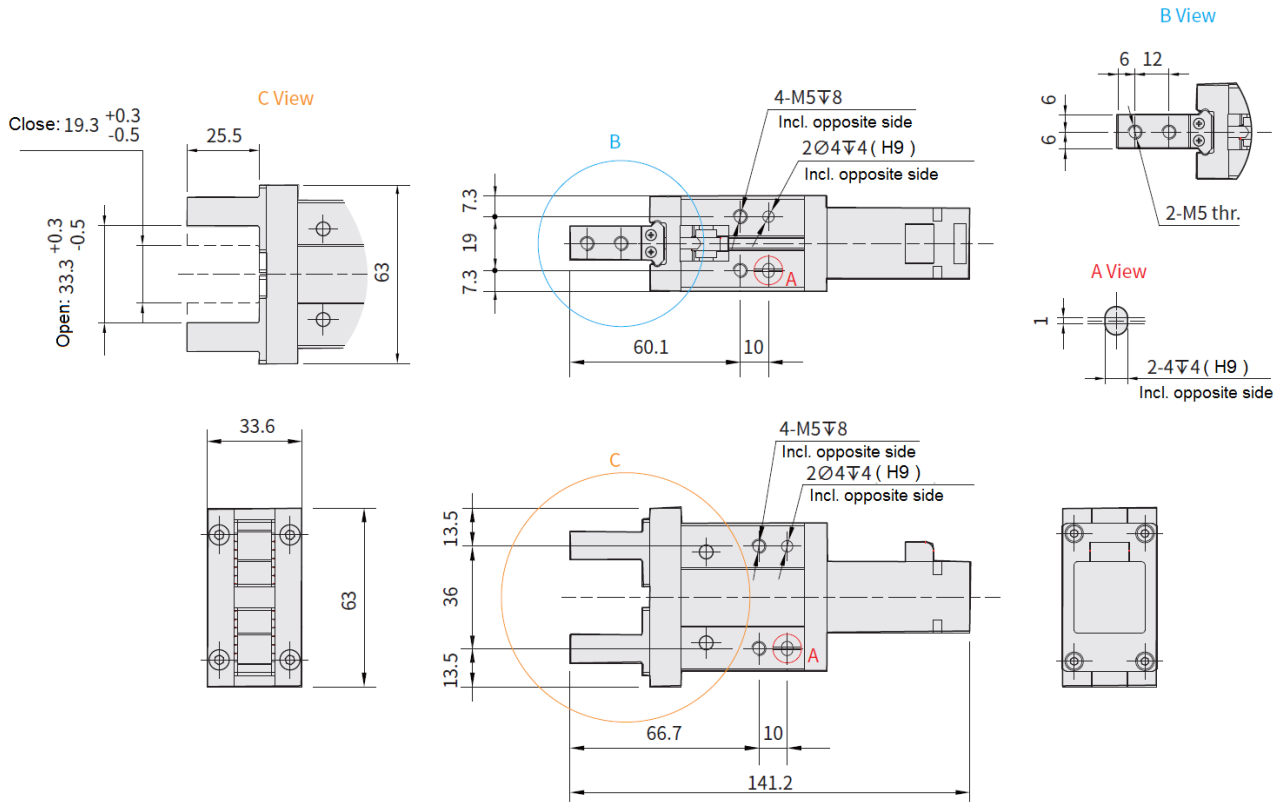
# Linear Electric Actuator

Series AEGL

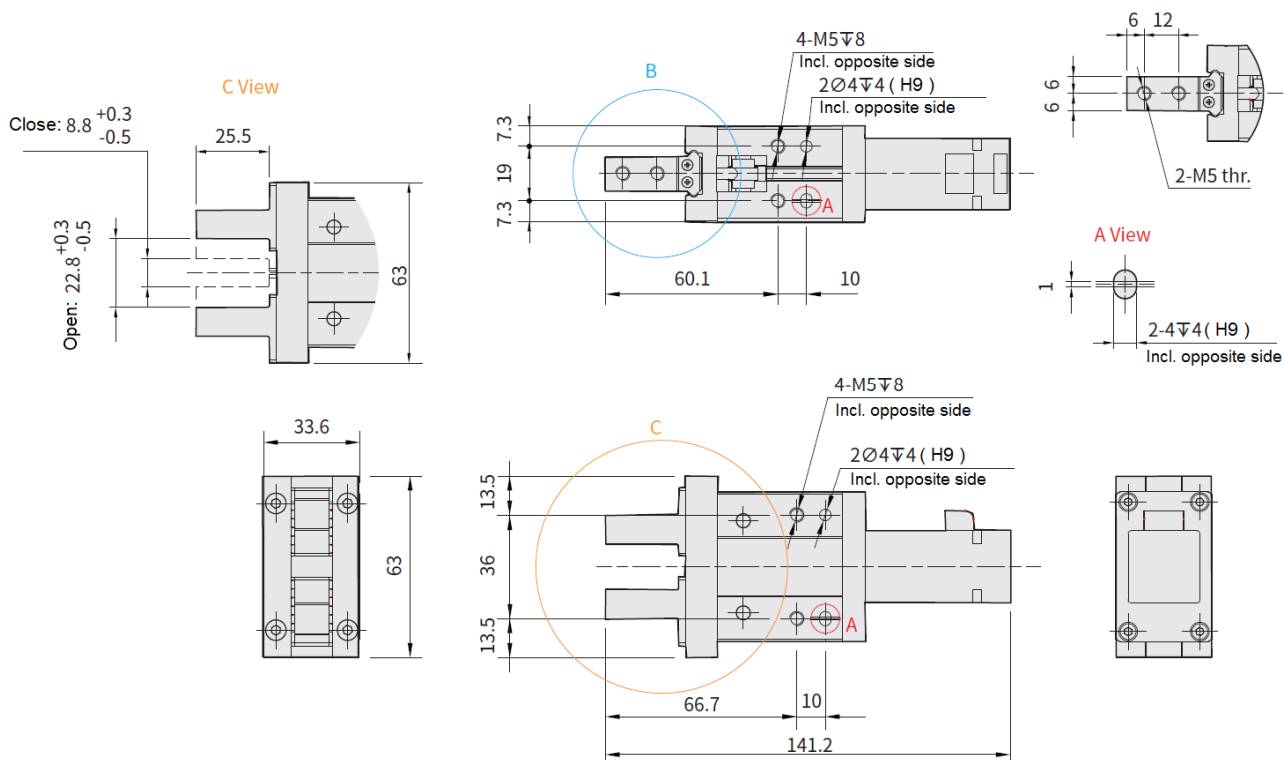
Cat :

## AEGL0014:

### Standard Type



### Narrow Type

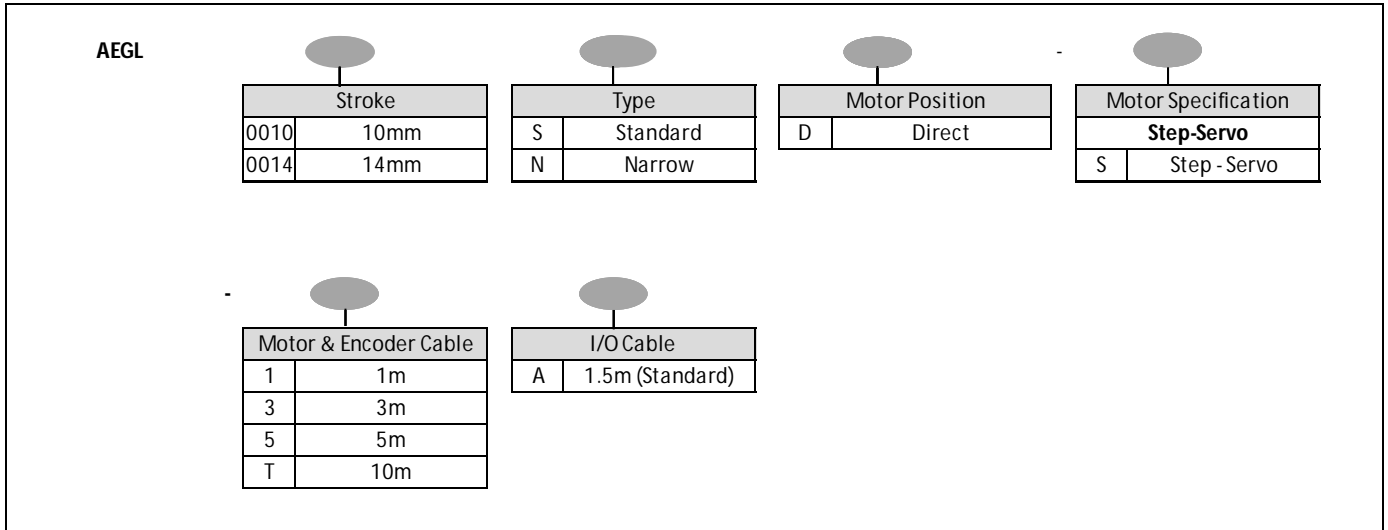


# Linear Electric Actuator

Series AEGL

Cat :

## How to order



### Example:

Ordering no. for Electric gripper Lead screw type, 10mm stroke, Standard type with step-servo motor mounted at direct with 3m motor & encoder cable and 1.5m I/O cable.

**AEGL0010SD-S-3A**